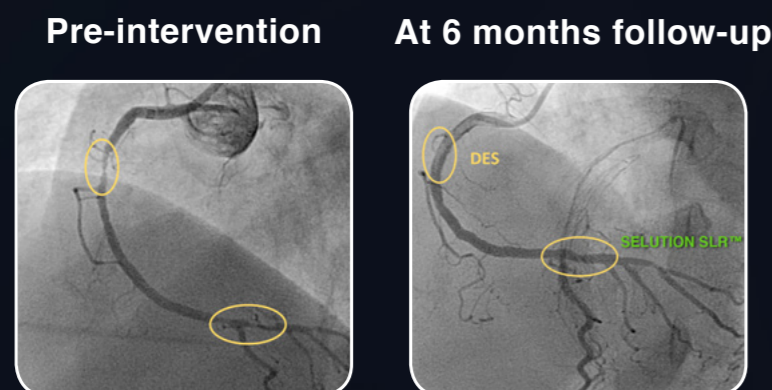


SELUTION SLR™ drug-eluting balloon (DEB) demonstrates safety and efficacy in First-in-Human coronary study⁴ and is designed to deliver similar performance as drug-eluting stents (DES)⁵.

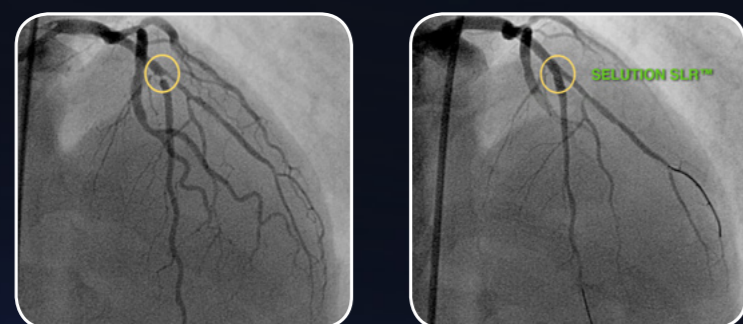
- Primary endpoint - 100% Freedom from device and procedure-related mortality through 30 days.
- Low overall MACE rate of 2% at 12 months.

Case examples from First-in-Human Coronary Study

Hybrid Approach (DES & DEB)



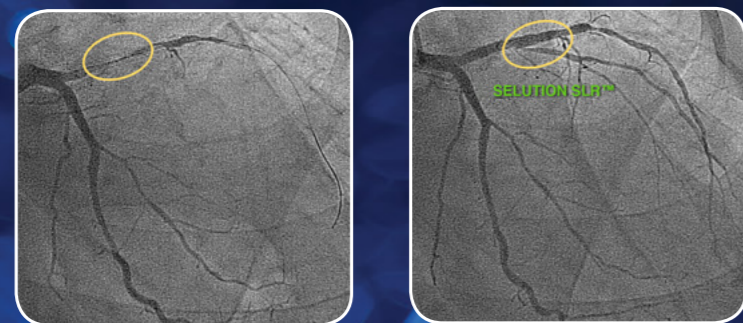
Bifurcations



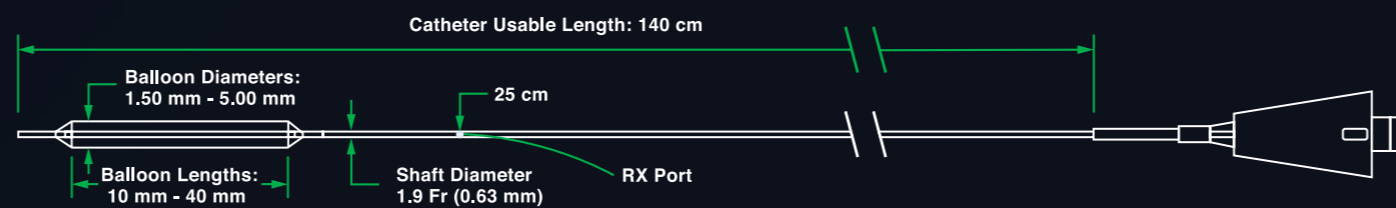
Small Vessels



In-Stent Restenosis



Technical Specification



Feature	Specification
Sirolimus Drug Dose	1.0 µg/mm ²
Drug Carrier	Cell Adherent Technology (CAT™) Amphipathic Lipid Carrier
Catheter Design	Rapid Exchange (RX)
Shaft Diameter	1.9 Fr (0.63 mm)
Catheter Usable Length	140 cm
Guidewire Compatibility	0.014"
Minimum Guide Catheter Compatibility (Fr)	≥ 5 Fr: 1.50 – 3.75 mm balloon diameter ≥ 6 Fr: 4.00 – 5.00 mm balloon diameter

Balloon	
Nominal Balloon Pressure (NP)	6 bar
Rated Burst Pressure (RBP)	12 bar
Balloon Diameters	1.50 mm – 5.00 mm
Balloon Lengths	10, 15, 20, 25, 30, 35, 40 mm

Ordering Information

SELUTION SLR™ Sirolimus Eluting PTCA Balloon Catheter

Balloon Diameter (mm)	Balloon Length (mm)						
	10	15	20	25	30	35	40
1.50	SC14-150010	SC14-150015	SC14-150020	SC14-150025	SC14-150030	SC14-150035	SC14-150040
2.00	SC14-200010	SC14-200015	SC14-200020	SC14-200025	SC14-200030	SC14-200035	SC14-200040
2.25	SC14-225010	SC14-225015	SC14-225020	SC14-225025	SC14-225030	SC14-225035	SC14-225040
2.50	SC14-250010	SC14-250015	SC14-250020	SC14-250025	SC14-250030	SC14-250035	SC14-250040
2.75	SC14-275010	SC14-275015	SC14-275020	SC14-275025	SC14-275030	SC14-275035	SC14-275040
3.00	SC14-300010	SC14-300015	SC14-300020	SC14-300025	SC14-300030	SC14-300035	SC14-300040
3.25	SC14-325010	SC14-325015	SC14-325020	SC14-325025	SC14-325030	SC14-325035	SC14-325040
3.50	SC14-350010	SC14-350015	SC14-350020	SC14-350025	SC14-350030	SC14-350035	SC14-350040
3.75	SC14-375010	SC14-375015	SC14-375020	SC14-375025	SC14-375030	SC14-375035	SC14-375040
4.00	SC14-400010	SC14-400015	SC14-400020	SC14-400025	SC14-400030	SC14-400035	SC14-400040
4.50	SC14-450010	SC14-450015	SC14-450020	SC14-450025	SC14-450030	SC14-450035	SC14-450040
5.00	SC14-500010	SC14-500015	SC14-500020	SC14-500025	SC14-500030	SC14-500035	SC14-500040

- 1.5. To achieve optimum performance from SELUTION SLR as a possible alternative to DES, follow the Instructions for Use in your implant procedure, and reference "How to use the drug-eluting balloon: recommendations by the German consensus group", Eurointervention 2011;7:K125-K128
2. MedAlliance is the first drug-eluting balloon (DEB) company in the world to be awarded US Food and Drug Administration (FDA) Breakthrough Device Designation Status.
3. Drug concentration evident in MicroReservoirs and tissue - Data on file at MedAlliance CardioVascular SA.
4. Windecker, S - Oral Presentation TCT 2019.

SELUTION SLR and CAT are trademarks of MedAlliance CardioVascular SA.

© 2021 MedAlliance CardioVascular SA.

Indication, contraindications and warnings can be found in the instructions for use supplied with each device.

SELUTION SLR Sirolimus Eluting PTCA Balloon Catheter - CE Mark Approved. Not available for sale in United States.

Legal Manufacturer: MedAlliance Cardiovascular SA, Rue de Rive 5, 1260 Nyon, Switzerland
T: + 41 22 363 78 90 | E: info@medalliance.com | W: www.medalliance.com

CE
0344

SAM-0004 Rev.B

SELUTION SLR™
SUSTAINED LIMUS RELEASE

Sirolimus Eluting PTCA Balloon Catheter



**The New Paradigm
for Coronary
Interventions**

The new Paradigm for Coronary Interventions.

Don't compromise on your treatment standard... **SELUtion SLR™** is the latest generation of Drug-Eluting Balloon technology.

- Offering you a greater choice of options for your coronary interventions.
- Designed to deliver the same safety and performance as the best-in-class DES technology¹ with the added benefit of "leaving nothing behind".



Breakthrough² Technology to Deliver Sustained Limus Release for up to 90 days³



Cell Adherent Technology (CAT™) is a proprietary amphipathic lipid technology which binds the MicroReservoirs to the balloon surface, protecting them during balloon insertion and inflation;

- Enhancing drug retention and bioavailability, allowing for a lower drug dose concentration on the balloon surface (1 µg/mm²).
- Optimizing transfer of MicroReservoirs to the tissue and maximizing the cellular uptake of sirolimus.



MicroReservoirs form millions of precision-engineered drug delivery systems, combining sirolimus with a biodegradable polymer, achieving consistent and predictable drug release;

- Optimizing MicroReservoir size to achieve a pharmaco-kinetic release profile comparable to the latest generation DES technology.



Latest Generation of PTCA Balloon

- Offering a broader portfolio for coronary indications with balloon diameters ranging from 1.50 mm to 5.00 mm and lengths from 10 mm to 40 mm.